



Using Blended Learning with Questioning Strategies

Our TUHSD Mission

TUHSD is committed to developing the potential of all students, staff, and community.



Our TUHSD Vision:
Learning today, leading tomorrow.

TUHSD Strategic Areas

- College, Career and Life-Ready Students
- Communication and Partnerships
- Creating a Highly Effective Work Force



Our TUHSD Vision:
Learning today, leading tomorrow.

Foundational Beliefs

- All decisions are student centered
- All TUHSD learners are globally prepared and competitive
- Guaranteed and viable curriculum, instruction and assessment
- We are committed to improving the TUHSD community



Our TUHSD Vision:
Learning today, leading tomorrow.

Three Interconnected Practices

- High functioning PLCs that use data and support student achievement
- Guaranteed viable curriculum, instruction and assessment
- Staff and student support and training





Management

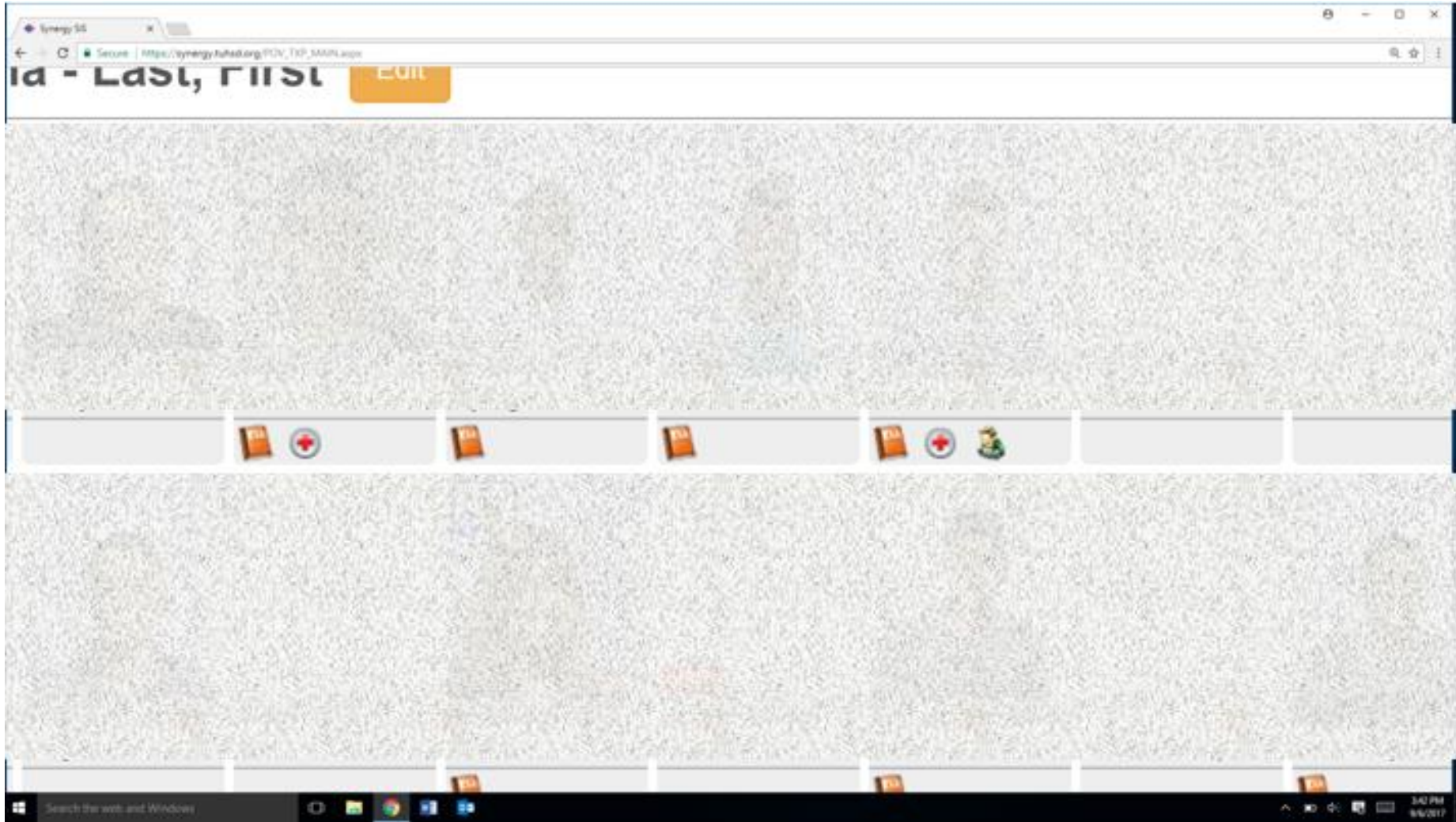
- Every classroom has a greeting before students enter the room
- Clearly stated rules are posted and followed
- Specific plans for technology for learning are communicated and followed
- Every student has a caring adult who connects with them each period

Instruction

- Lesson plans are prepared for each lesson taught with Elements of Instruction in mind
- Each lesson has the State Standards posted and the learning objective communicated
- Execution of lesson shows students' visible authentic engagement in the lesson

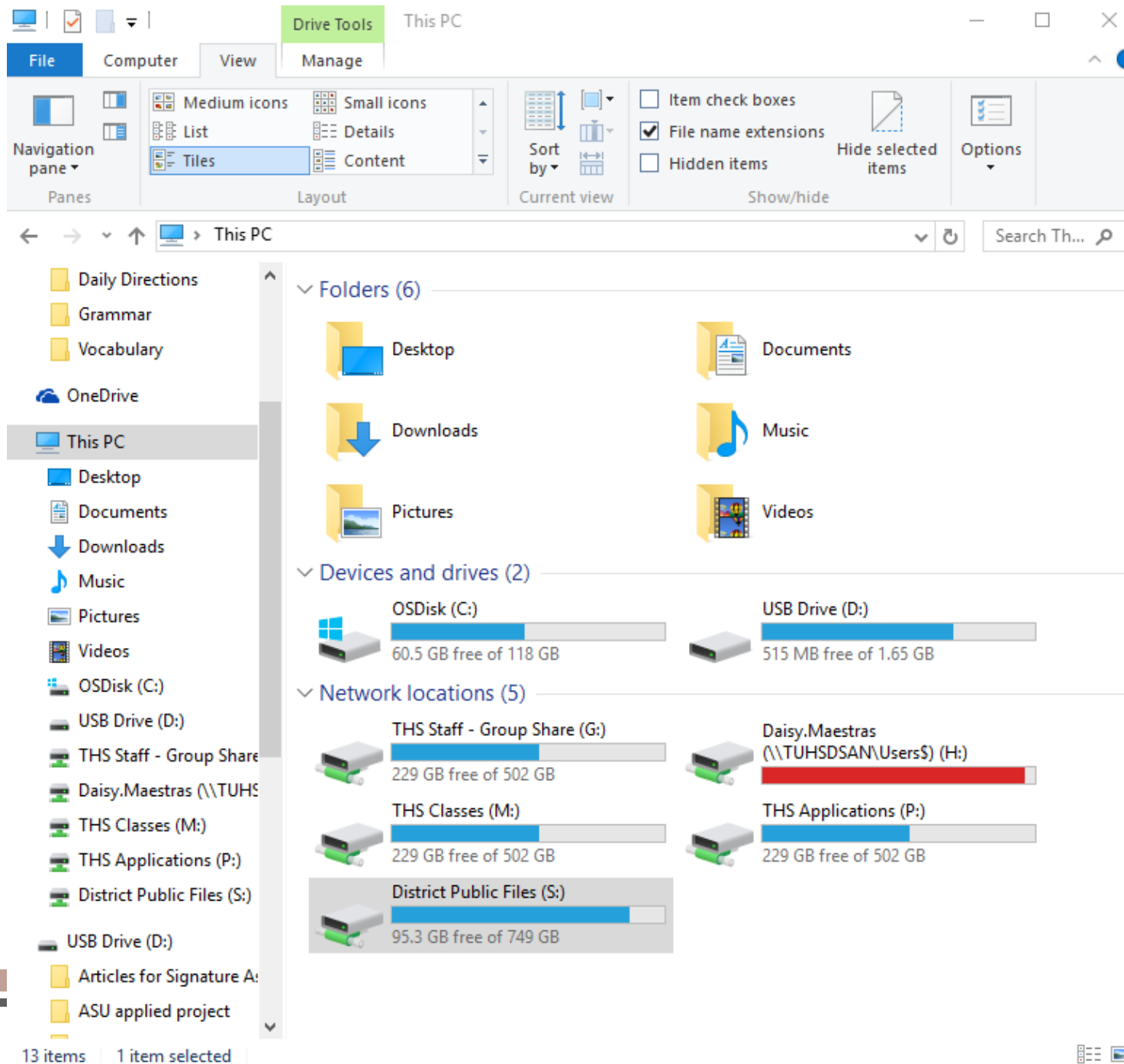


Accessing EL student information



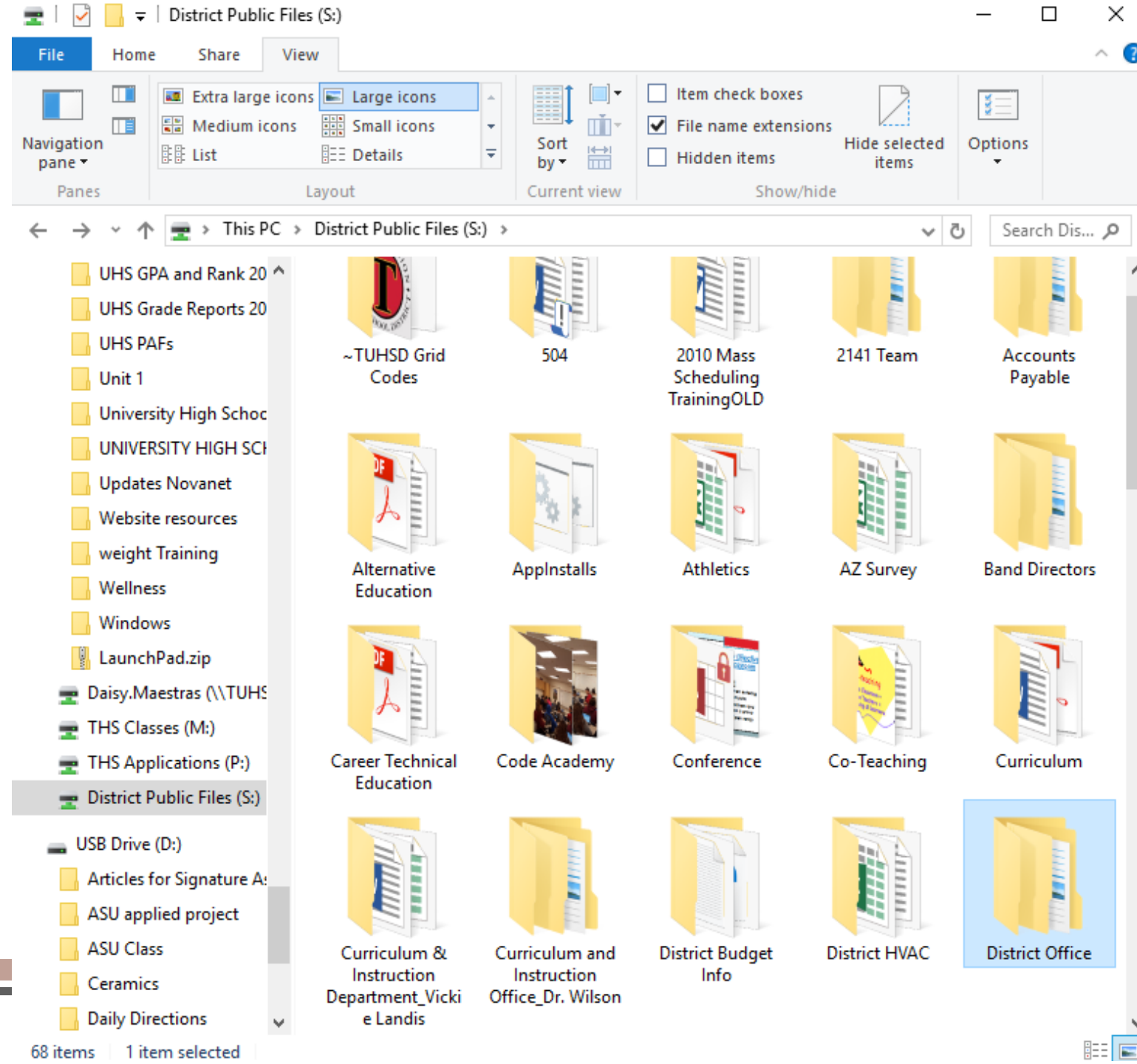


- District Public Files (S:)



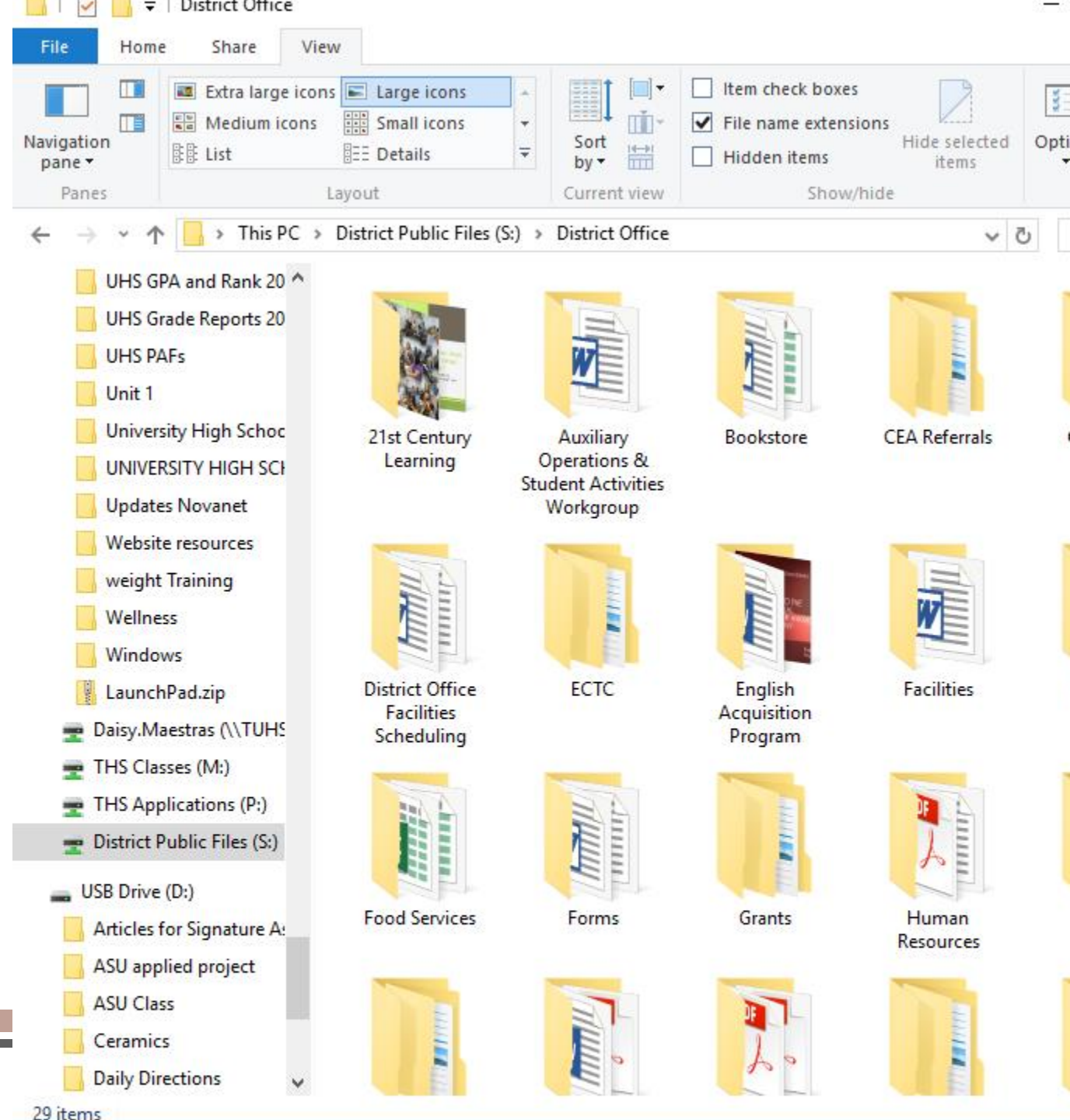


- District Public Files (S:)
- → District Office



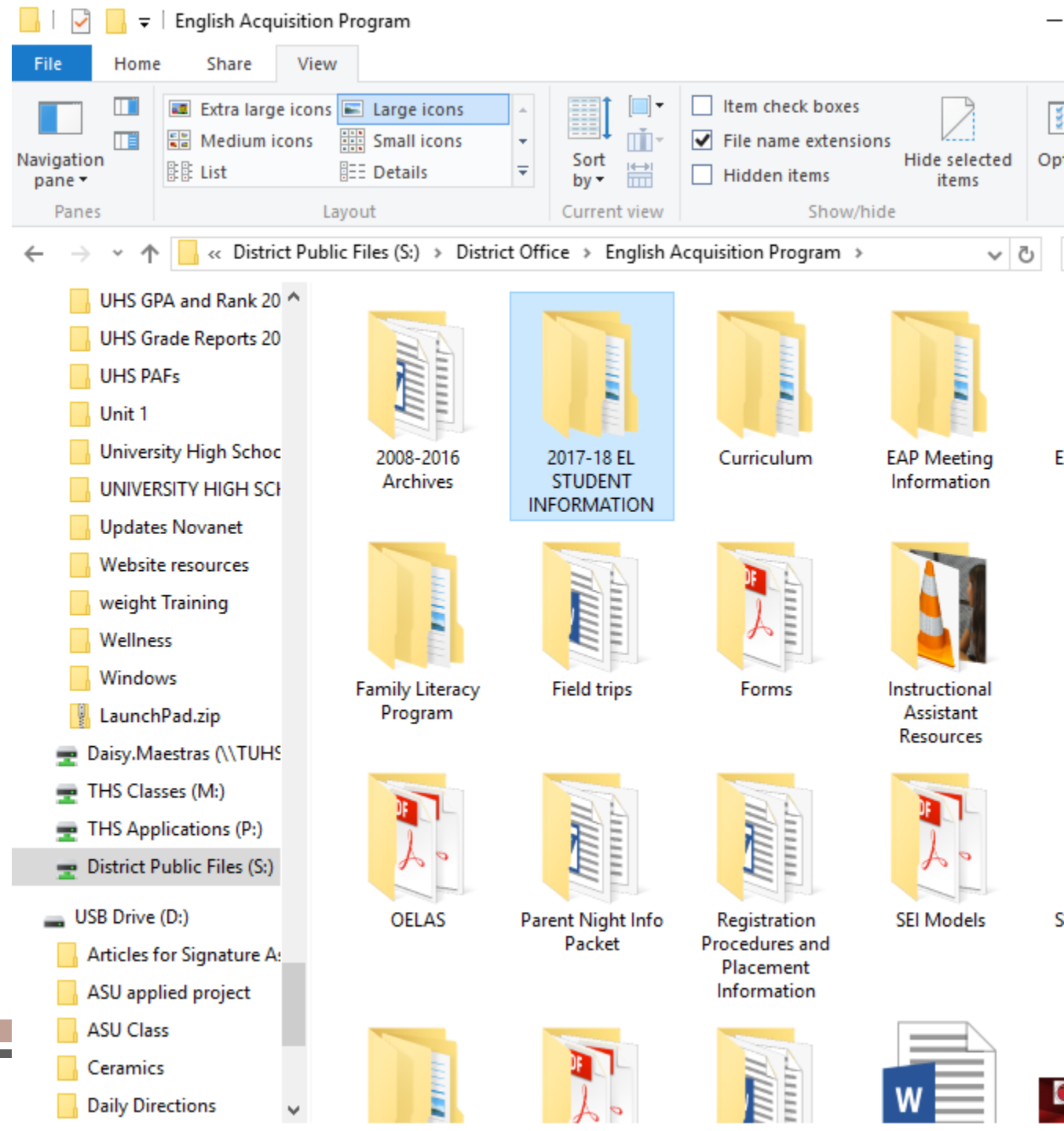


- District Public Files (S:)
- District Office
- → English Acquisition Program



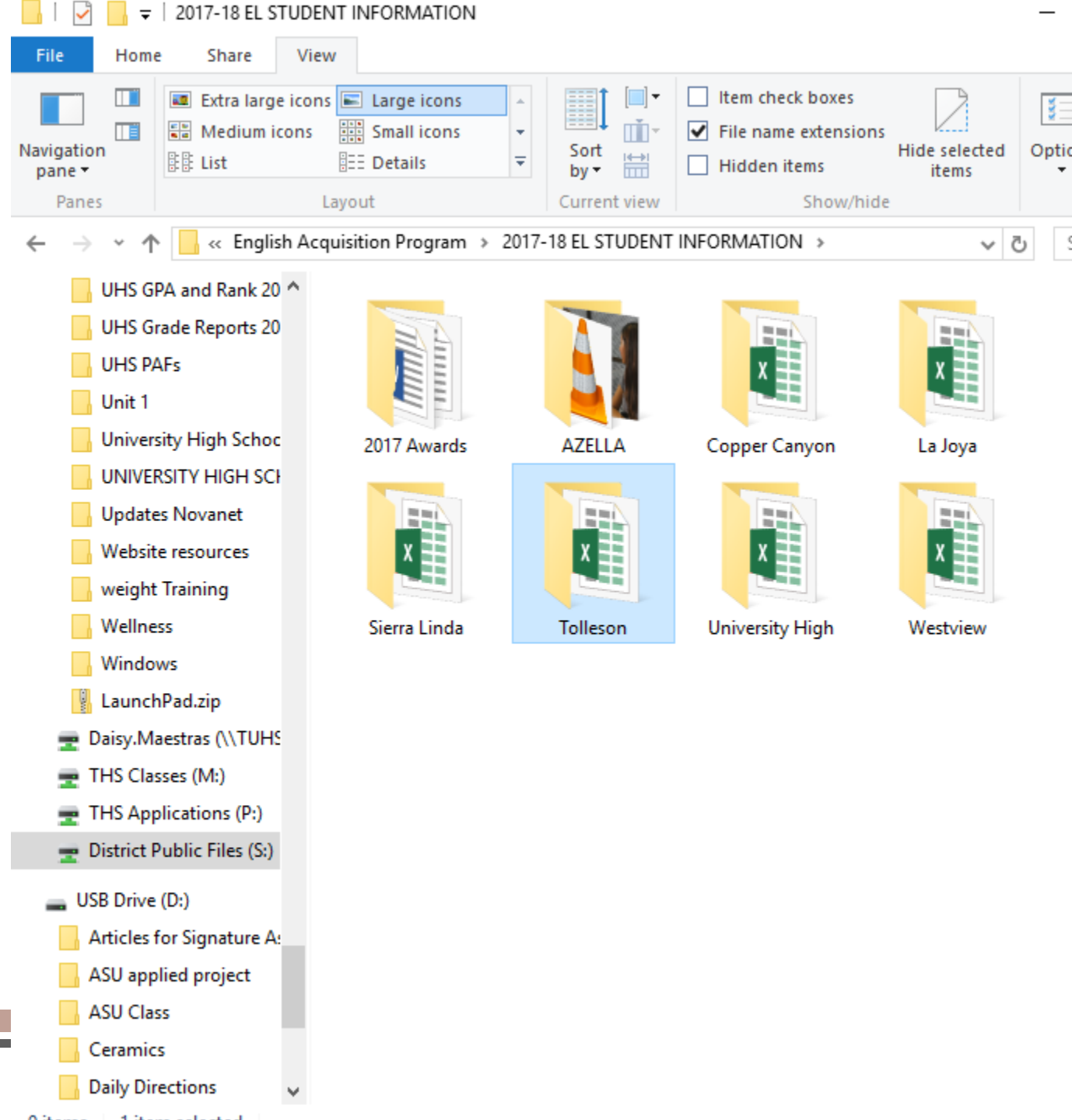


- District Public Files (S:)
- District Office
- English Acquisition Program
- → 2017-18 EL STUDENT INFORMATION





- District Public Files (S:)
 - District Office
 - English Acquisition Program
 - 2017-18 EL STUDENT INFORMATION
- ## INFORMATION
- → Choose your school





- District Public Files (S:)
- District Office
- English Acquisition Program
- 2017-18 EL STUDENT INFORMATION
- Choose your school
- Excel File

Excel spreadsheet showing EL Student Information for 2017-18. The spreadsheet is titled 'Intermediate' and contains columns for SAIS, School ID, Last Name, First Name, Grade, Status, Test Date, Overall Proficiency Level, Pre-Emergent, Basic, Intermediate, and Total Scale Score. The data is organized into rows, with some rows highlighted in yellow, pink, or green. The status column is color-coded: green for 'Intermediate', yellow for 'Basic', and red for 'Pre-Em/Em/B'.

	A	B	C	D	E	F	G	H	J	K	L	M
	SAIS	School ID	Last Name	First Name	Grade	Status	Test Date	Overall Proficiency Level	Pre-Emergent	Basic	Intermediate	Total Scale Score
1												
2					9	EL	2/21/2017	Intermediate			1	2447
3					10	EL	3/17/2017	Intermediate			1	2504
4					9	EL	2/13/2017	Basic		1		2425
5					9	EL	3/6/2017	Basic		1		2414
6					10	EL	3/17/2017	Pre-Em/Em/B	1			2425
7					9	EL	2/14/2017	Intermediate			1	2553
8					11	EL	3/17/2017	Intermediate			1	2471
9					9	EL	2/7/2017	Basic		1		2442
10					9	EL	2/16/2017	Intermediate			1	2560
11					9	EL	2/15/2017	Intermediate			1	2548
12					9	EL	3/2/2017	Intermediate			1	2478
13					9	EL	2/16/2017	Intermediate			1	2520
14					9	EL	2/13/2017	Intermediate			1	2454
15					9	EL	2/13/2017	Intermediate			1	2458
16					9	EL	2/17/2017	Basic		1		2417
17					9	EL	2/13/2017	Intermediate			1	2527
18					10	EL	2/10/2017	Pre-Em/Em/B	1			2379
19					9	EL	3/8/2017	Basic		1		2404
20					12	EL	2/10/2017	Pre-Em/Em/B	1			2412
21					11	EL	2/14/2017	Pre-Em/Em/B	1			2385



EAP Fluency Levels



Pre-emergent

- Students have minimal comprehension of English and Virtually no verbal production





Emergent

- Students have limited comprehension but can repeat and recite and produce one to two word responses.





Basic

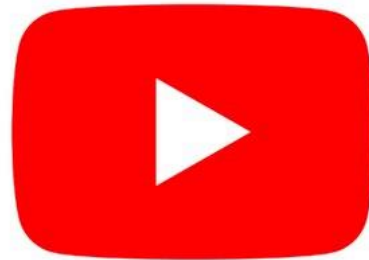
- Students have good comprehension of contextualized information and are able to communicate on a basic social level





Intermediate

- Students demonstrate both social and academic understanding of language, engage in conversation and demonstrate ability to use higher order language.





Proficient

- Students have very good comprehension and can produce oral language that is comparable to that of native speakers with still some difficulties with idiosyncratic and connotative English.





What can teachers do?

- Accommodations resource
- Modification resource (high-lighted graphic organizer)



Remember the 5 R's

- Repeat
- Rephrase
- Reiterate
- Restate
- Reword



Survey

<http://tinyurl.com/TUHSDPD9-13>